

Truck Management on Motorways under Winter Conditions in Austria

Heimo Maier-Farkas

Head of Department Road Operations Maintenance

heimo.maier-farkas@asfinag.at

VIRTUAL | VIRTUEL

XVI WORLD WINTER SERVICE AND ROAD RESILIENCE CONGRESS
XVI^e CONGRÈS MONDIAL DE LA VIABILITÉ HIVERNALE ET DE LA RÉSILIENCE ROUTIÈRE
XVI CONGRESO MUNDIAL DE VIALIDAD INVERNAL Y RESILIENCIA DE LA CARRETERA

Austria - Europe

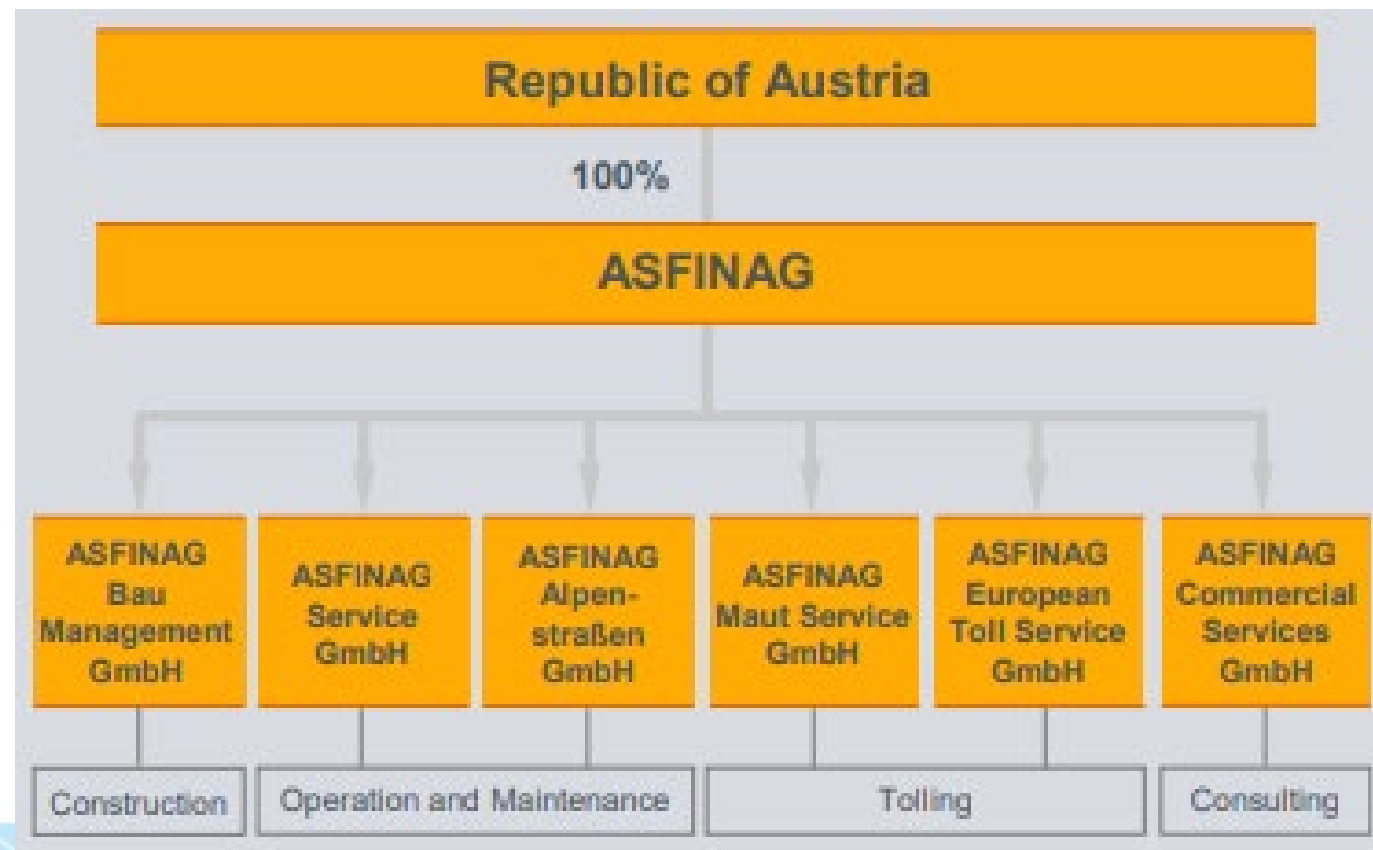


Table of Content

- Company
- Facts, Figures, Data
- Modern Winter Maintenance Management
 - History
 - Dynamic Winter Maintenance Management
- Truck Management

Group of companies

ASFINAG was founded in 1982 and is 100 % owned by the Republic of Austria.



Asfinag Overview

- **Tasks:** Planning, construction, maintenance, operation, funding and tolling of motorways and expressways in Austria
- **Road network:** In operation: 2,199 km
- **Employees – group:** 2,769
- **Motorway maintenance center:** 43
- **National traffic management centre:** 1
- **Regional traffic management centres:** 9
- **Financing:** Vehicles < 3.5 t: toll stickers + special tolls
Trucks > 3.5 t: mileage-dependent toll

The Asfinag Mission

ASFINAG is an efficiently operating **user-financed builder and operator of motorways** and expressways.

We provide a **road network** that meets our customers' requirements, is **well-serviced** and developed with a special focus on road safety and **optimal availability**, as well as user-friendly tolling systems.

All our activities are directed towards fulfilling our economic, environmental and social responsibilities whilst strengthening Austria's position as a business location.

The Asfinag Visison

ASFINAG is one of Europe's leading motorway network operators with a special focus on

- availability
- traffic management
- traffic information
- road safety
- technological innovations

We act internationally and interlink with public transport.

Development of the Asfinag Road Network Motorway Operation and Maintenance



ASFINAG MOTORWAY MAINTENANCE, MONITORING CENTRES

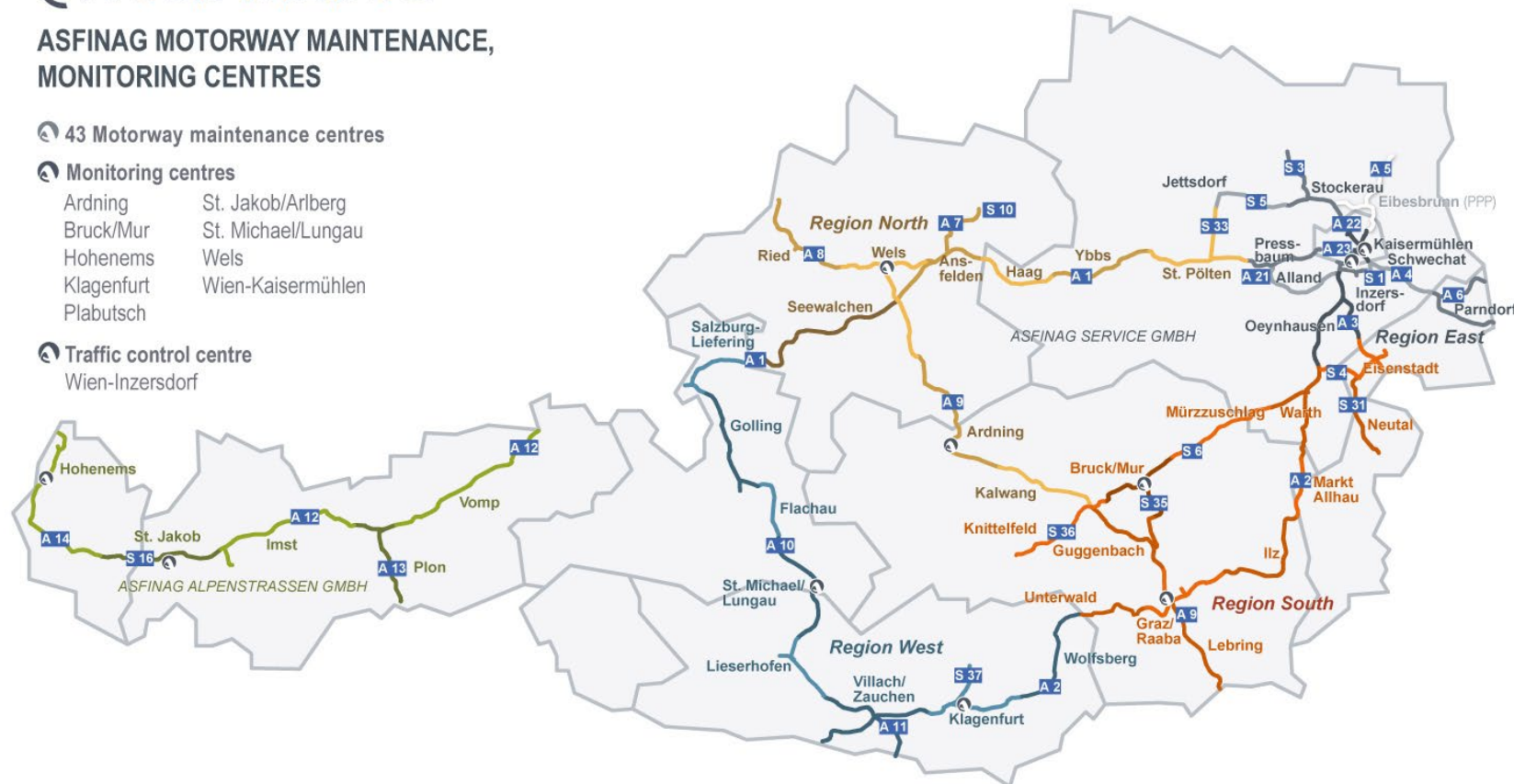
43 Motorway maintenance centres

Monitoring centres

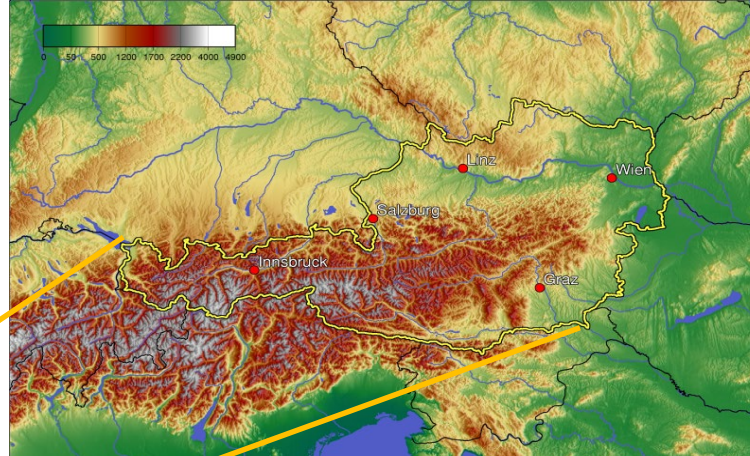
Ardning	St. Jakob/Arberg
Bruck/Mur	St. Michael/Lungau
Hohenems	Wels
Klagenfurt	Wien-Kaisermühlen
Plabutsch	

Traffic control centre

Wien-Inzersdorf



The Austrian Landscape



The Austrian landscape falls into five main sections:

Eastern Alps 20,332 sq. miles = 62.8 %

Alpine and Carpathian Foothills
3,658 sq. miles = 11.3 %

Pannonian Lowlands
3,658 sq. miles = 11.3 %

Vienna Basin 1,424 sq. miles = 4.4 %

Granite and Gneiss Highlands (Bohemian Massif)
3,269 sq. miles = 10.1%

Winter Maintenance Management



Dynamic Winter Maintenance Management



Know-how and practical experience

- Know-How
- Practical Experience
- Motivated Personnel
- Continues Training and Benchmarking



Innovative Winter Maintenance Strategies

- Winter Weather and Forecasts
- Pavement Surface Temperature Predication
- Hoarfrost Measurement and Predication
- Preventive Salting with NaCl brine



Modern Equipment

- New vehicles and ploughs
- NaCl Brine spreader combined with jet nozzles spray blocks
- Fire Storm



Truck Management – Highway Nr. 21



ASFINAG MOTORWAY MAINTENANCE, MONITORING CENTRES

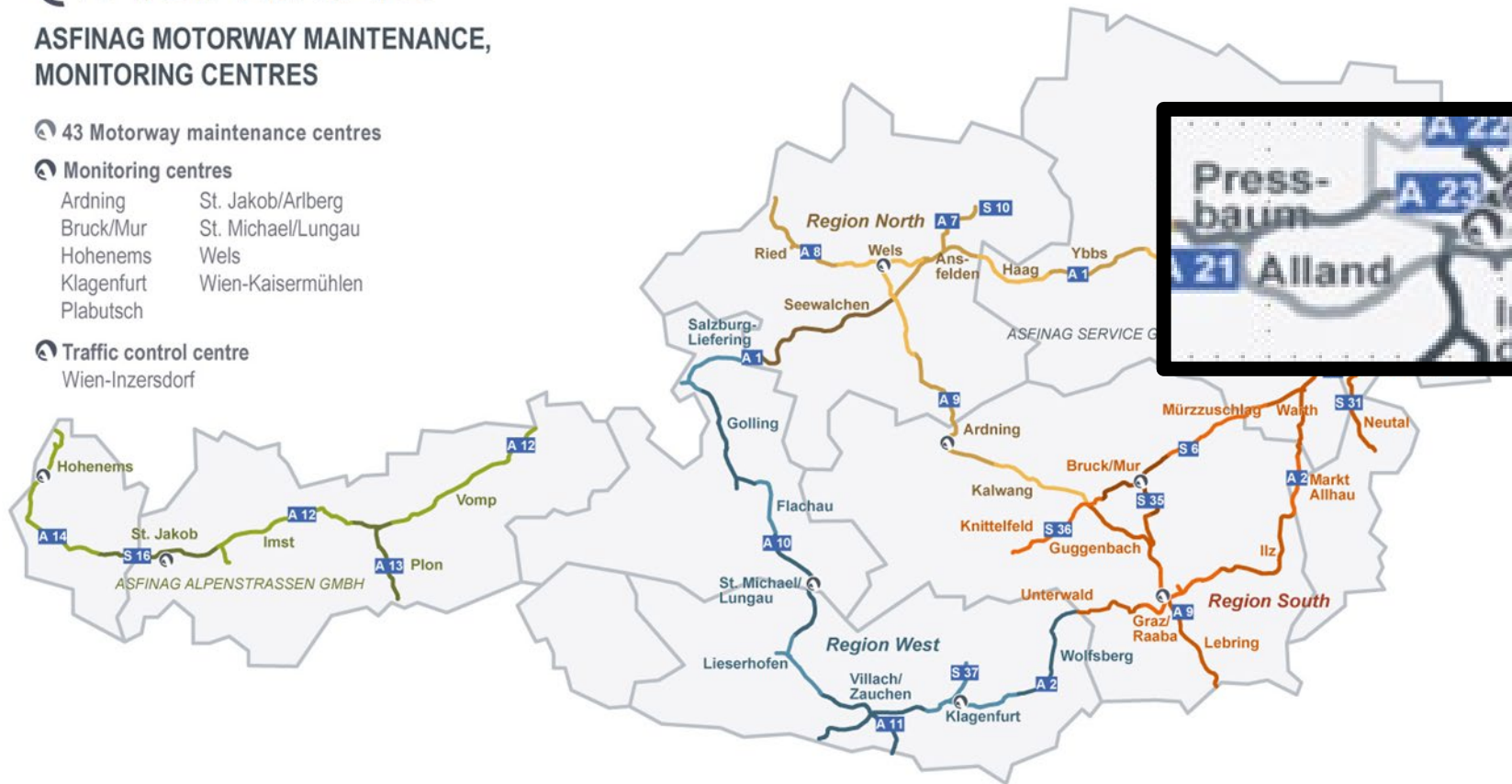
43 Motorway maintenance centres

Monitoring centres

Ardning	St. Jakob/Arlberg
Bruck/Mur	St. Michael/Lungau
Hohenems	Wels
Klagenfurt	Wien-Kaisermühlen
Plabutsch	

Traffic control centre

Wien-Inzersdorf



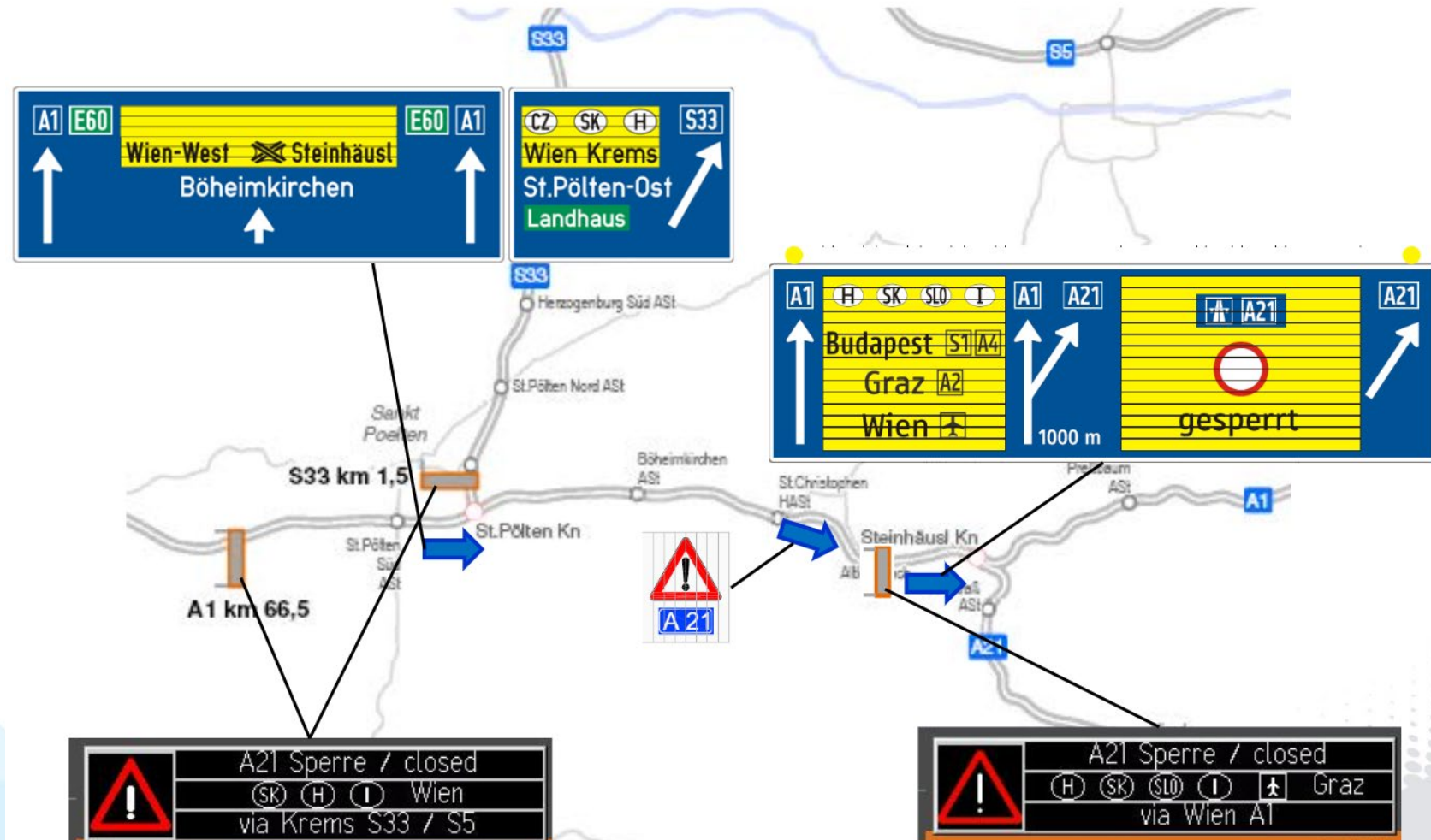
Highway Nr. 21



Truck Parking Area



Traffic Management Systems





© Stefan Schneider

Thank you!

- Please don't hesitate to contact with a question or further informationen.

Heimo Maier-Farkas MSc

Head of the Departement

Road Operation and Maintenance

Asfinag Service GmbH

Traunuferstraße 9

A-4052 Ansfelden

Austria

Mobil: 0043 664 6010816301

mail: heimo.maier-farkas@asfinag.at

At your service 24 hours a day:

ASFINAG Service Center

Tel: 0800 400 12 400

info@asfinag.at

asfinag.at

