

Heavy Goods Vehicles management under winter conditions

Jörg Dreier

Head of the Swiss Traffic Management Centre VMZ-CH

joerg.dreier@astra.admin.ch

VIRTUAL | VIRTUEL

XVI WORLD WINTER SERVICE AND ROAD RESILIENCE CONGRESS
XVI^e CONGRÈS MONDIAL DE LA VIABILITÉ HIVERNALE ET DE LA RÉSILIENCE ROUTIÈRE
XVI CONGRESO MUNDIAL DE VIALIDAD INVERNAL Y RESILIENCIA DE LA CARRETERA



Background

Switzerland and the Alps

- transit country in the middle of Europe
- mountain range with many peaks over 3'000m

"National Roads" network

- ~2'260 km roads of national significance

FEDRO responsible for

- construction, maintenance and operation
- (HGV) traffic management



What's the problem?

Mountainous roads are challenging

- curvy and steep inclines/declines
- weather conditions worsen with altitude

HGV are often not fit for winter conditions.

Drivers are often overwhelmed by hazardous situations.

Vehicles may slide, twist and endanger themselves and other road users.



Our aim: to increase safety on the roads and efficiency of clearing works

1 - Heavy snowfall in the mountains

onset of winter worsens road conditions



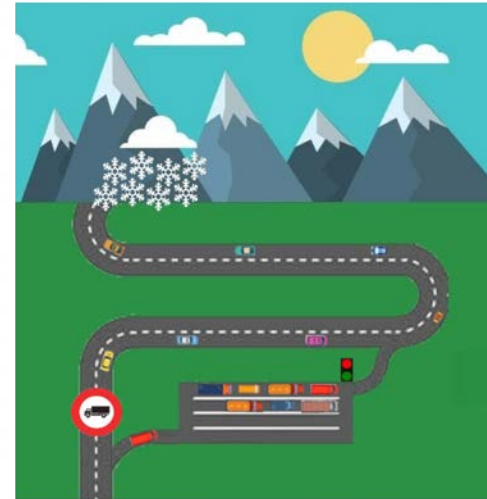
2 - Problem: Traffic Congestions

accidents and traffic jams hinder clearing works



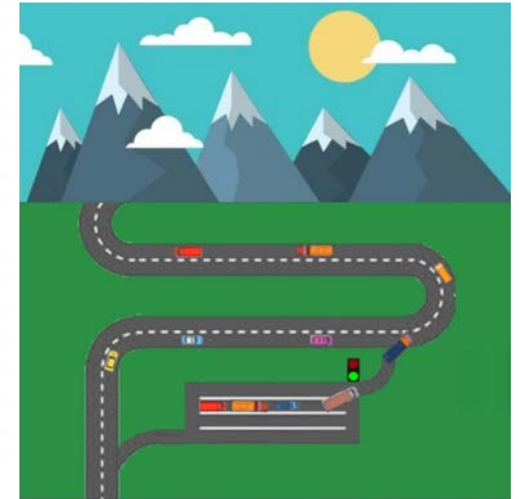
3 - Solution: Holding Areas

HGV diverted to holding areas and roads can be cleared

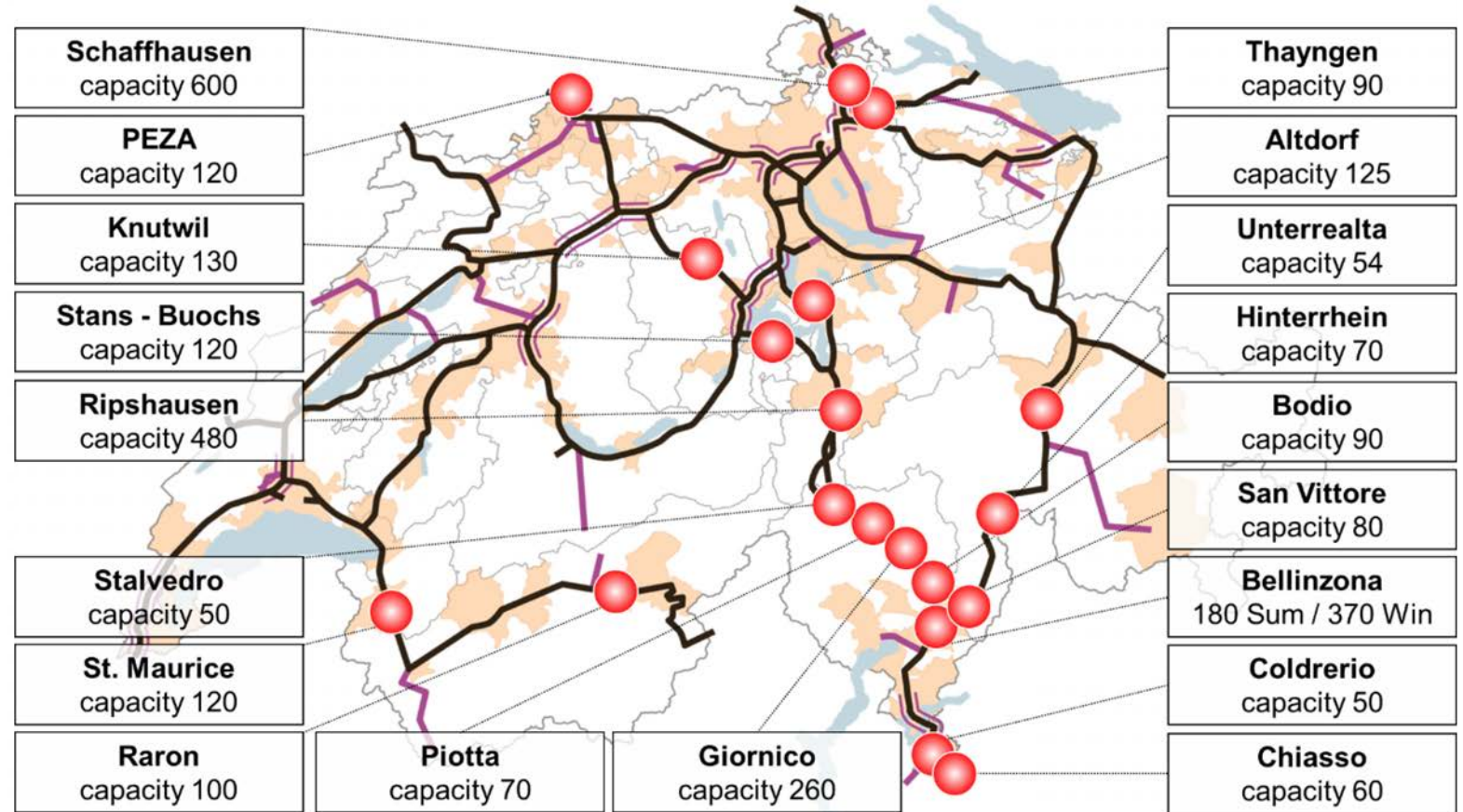


4 - Dosed continuation

HGV are released in a controlled way



Holding areas located along the Swiss transalpine axes



Size and design vary according needs

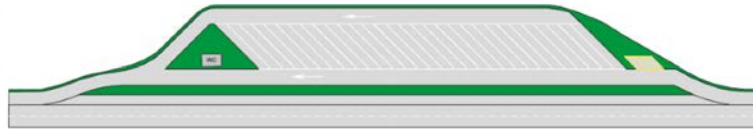
Emergency holding area

breakdown lane serves as holding area



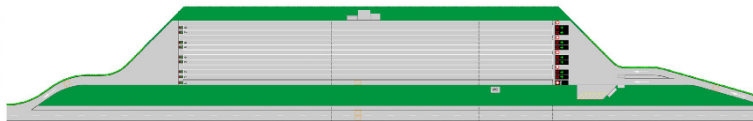
Slantwise line-up

independent departures



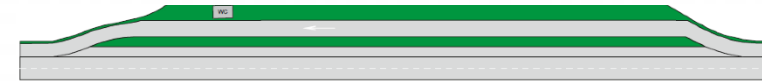
Dosage system

constant traffic flows at the exit



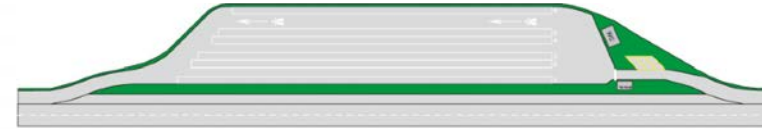
Along the route

structurally separated, additional lane



Column line-up

triage and denser arrangement

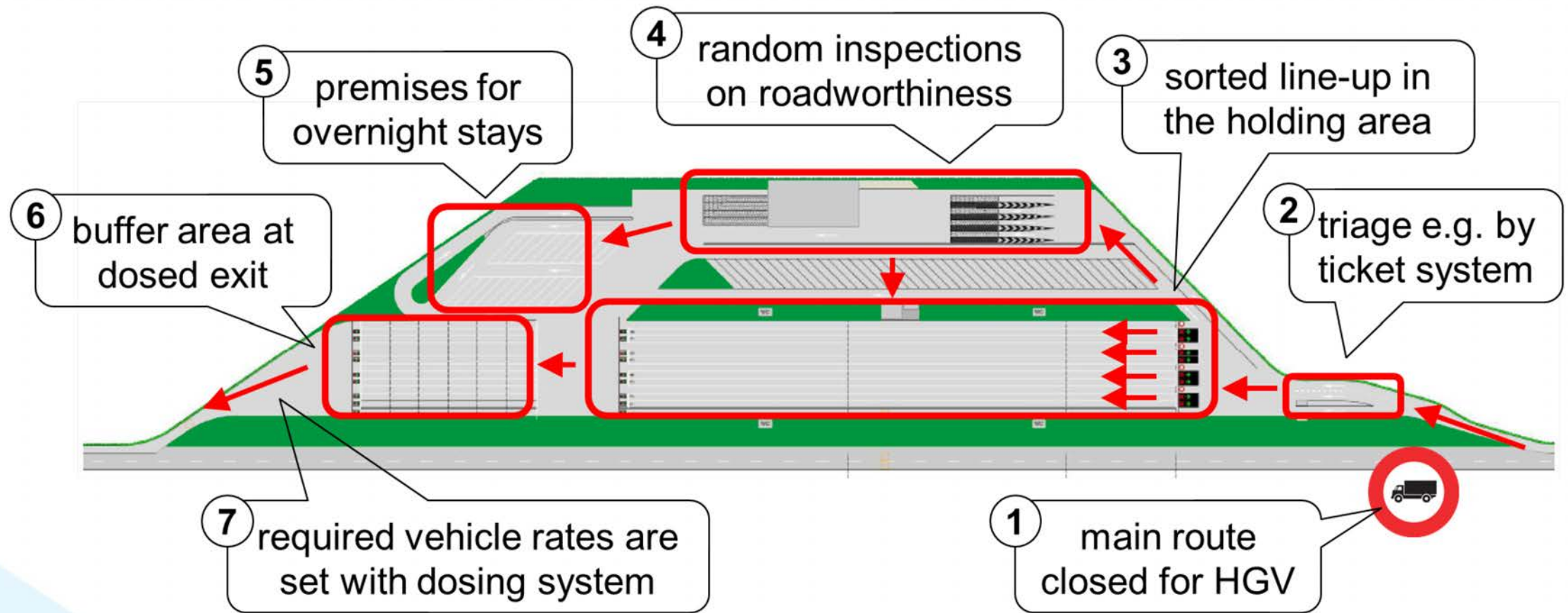


Combined with HGV control center

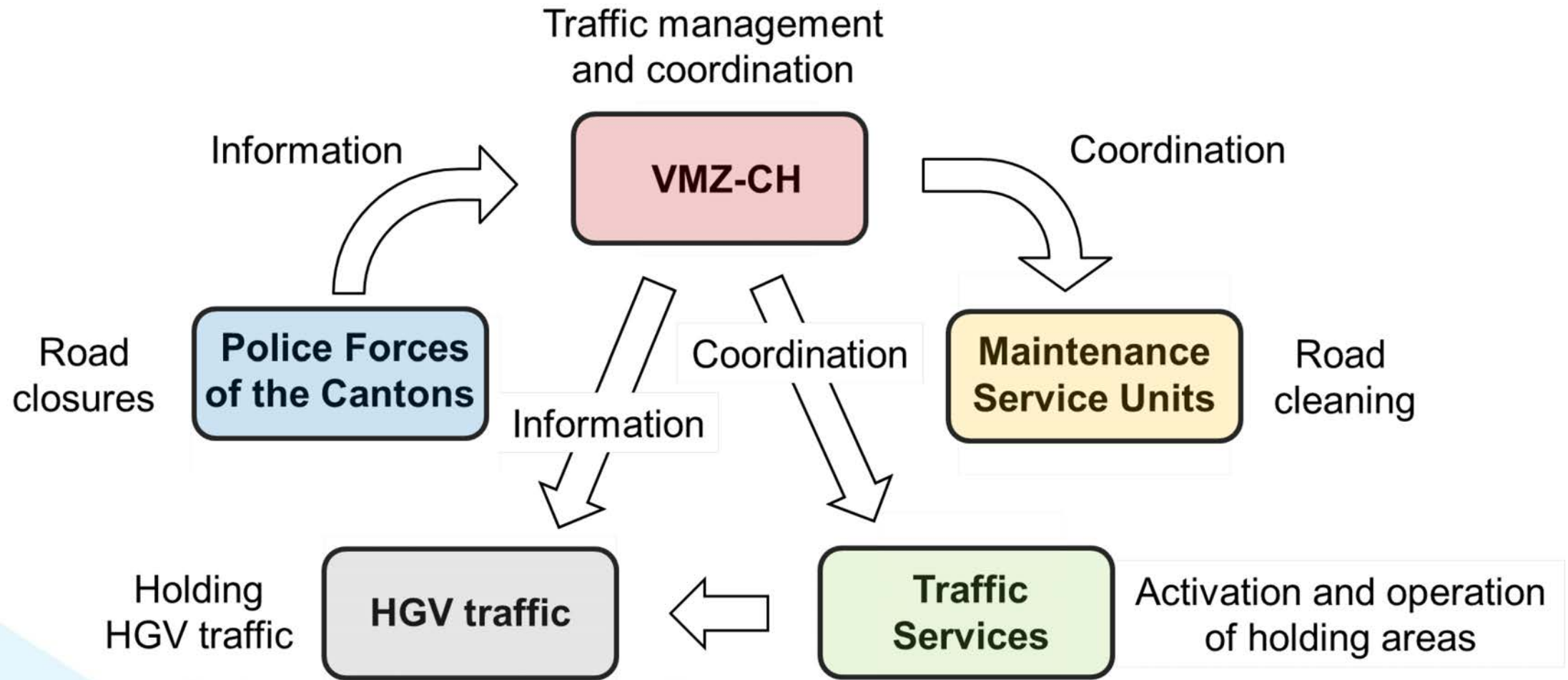
checks on roadworthiness of vehicles



Holding areas functionalities



Parties involved in operation



Thank you very much

